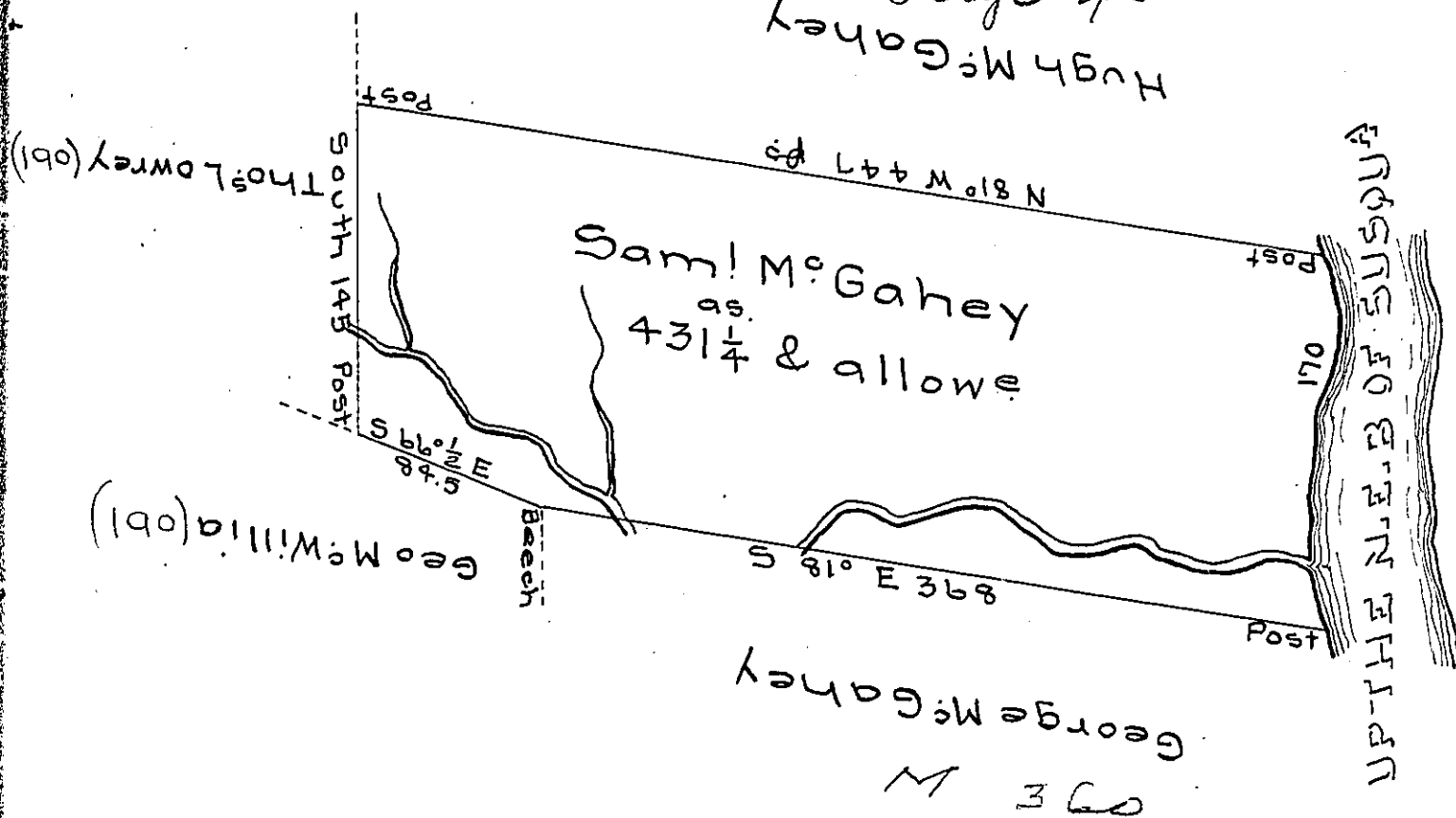


Page 45  
Hugh Mc Gahey



Draught of a tract of land called — situate on the N.E. Branch of Susqua<sup>a</sup> in the great bend joining land su (obl) for George M<sup>c</sup> Gahey & others in Northumberland County containing four hundred & thirty one acres  $\frac{1}{4}$  & allow<sup>e</sup> of six p<sup>er</sup> cent for roads & surveyed for Saml M<sup>c</sup> Gahe (obl) the 3<sup>d</sup> day of June 1785 in pursu-  
 ance of a warrant d (obl) the 4<sup>th</sup> day of April 1785

To John Lukens Esqr } by W<sup>m</sup> Gray D (obl)  
 Surv<sup>r</sup> Gen!

*IN TESTIMONY* that the above is a copy of the original remaining on file in the Department of Internal Affairs of Pennsylvania, made conformably to an Act of Assembly approved the 16th day of February, 1833, I have hereunto set my Hand and caused the Seal of said Department to be affixed at Harrisburg, this twenty-third day of November 1905

*Isaac D Brown*  
 Secretary of Internal Affairs.